

1 LITTLE DRIVE, SOUTH FERRING, BN12 5RF
£525,000



— *Mark* —
OLIVER

FERRING
01903 503111

— *Sales and Lettings* —

— *Mark* —
OLIVER

2 Ocean Parade, Ferring, West Sussex, BN12 5QQ

1 Little Drive, South Ferring, BN12 5RF

A great opportunity to purchase a spacious detached chalet bungalow requiring modernisation and updating nestled within highly sought after South Ferring. Spacious accommodation and south aspect rear gardens. Within easy walking distance of the beach and local shopping parade. CHAIN FREE.



PORCH

Double glazed front door. Part glazed inner door to the hall.

HALL

Radiator. Built in airing cupboard with radiator..



LIVING ROOM

14'9" x 13'10" (4.52 x 4.22)

South aspect. Fireplace. Radiator. Double glazed sliding patio doors to the rear gardens.



DINING ROOM

9'9" x 11'9" (2.98 x 3.60)

Radiator. Door to the kitchen. Double glazed window with shutters.



KITCHEN & UTILITY ROOM

8'7" x 6'6" (2.63 x 1.99)

With part tiled walls. Units comprise a sink unit with a range of working surfaces with cupboards and drawers. Built in Hisense oven, Built in Neff electric hob and extractor. Double glazed windows and door to the rear gardens. Wall mounted Potterton gas boiler. Window shutter. Radiator.



UTILITY ROOM

7'0" x 6'6" (2.14 x 1.99)

Combined with the kitchen this area is through an open arch.

GROUND FLOOR BATHROOM

Part tiled walls. Panelled bath with fitted shower. Wash basin and wc. Heated towel rail.



BEDROOM 2

Radiator. Fitted wardrobes. Double glazed windows with shutters.



FIRST FLOOR BEDROOM 1

17'4" x 12'0" (5.30 x 3.68)

Radiator. Velux windows and double glazed window with shutter.



SITTING ROOM / BEDROOM 3

12'5" x 12'10" (3.80 x 3.92)

Radiator. Double glazed window. Stairs to the first floor.



ENSUITE BATHROOM

Tiled walls. Panelled bath with fitted shower. Wash basin and wc. Velux window. Radiator.



GARAGE STORE AREA

Remote controlled up and over door. The garage has been converted to a small storage area to the front leading to a garage study / office / workshop / hobby's room.



**GARAGE STUDY / OFFICE / WORKSHOP /
HOBBYS ROOM**

16'1" x 7'10" (4.92 x 2.40)

Door to the rear garden. Fitted cupboards.

REAR GARDEN

A lovely well secluded south aspect rear garden. Laid mainly to lawn with flower and shrub borders and two sheds.

IN AND OUT DRIVE WAY

The large in and out paved drive provides plenty of off road parking space.



COUNCIL TAX BAND E





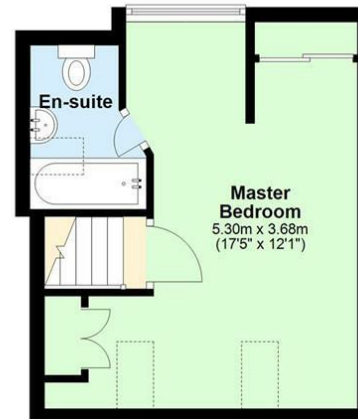
Ground Floor

Approx. 99.6 sq. metres (1072.2 sq. feet)

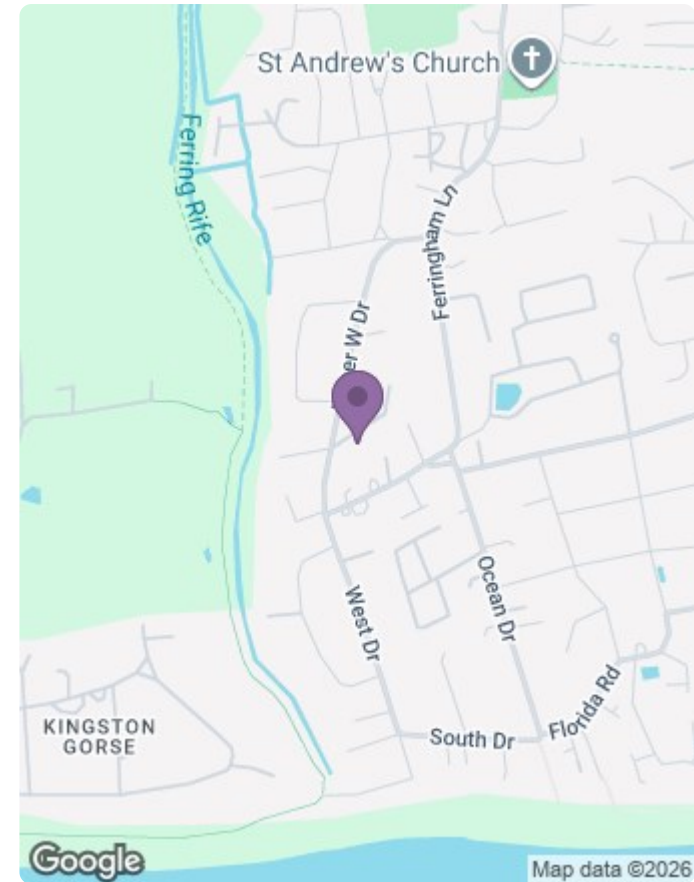


First Floor

Approx. 22.8 sq. metres (245.9 sq. feet)



Total area: approx. 122.5 sq. metres (1318.1 sq. feet)



Energy Efficiency Rating		Current	Potential
Very energy efficient - lower running costs			
(92 plus) A			
(81-91) B			
(69-80) C			
(55-68) D			
(39-54) E			
(21-38) F			
(1-20) G			
Not energy efficient - higher running costs			
England & Wales		EU Directive 2002/91/EC	72

Environmental Impact (CO ₂) Rating		Current	Potential
Very environmentally friendly - lower CO ₂ emissions			
(92 plus) A			
(81-91) B			
(69-80) C			
(55-68) D			
(39-54) E			
(21-38) F			
(1-20) G			
Not environmentally friendly - higher CO ₂ emissions			
England & Wales		EU Directive 2002/91/EC	



These particulars, whilst believed to be accurate are set out as a general outline only for guidance and do not constitute any part of an offer or contract. Intending purchasers should not rely on them as statements of representation of fact, but must satisfy themselves by inspection or otherwise as to their accuracy. No person in this firm's employment has the authority to make or give any representation or warranty in respect of the property. If you are local to us and have a property to sell we would be delighted to provide you with a free market appraisal and market valuation carried out personally by Mark Oliver. Please contact our office for an appointment at a time to suit you. In regard to leasehold properties we strongly advise buyers to check the length of leases prior to proceeding.